

WESLEY

MADE BY JOHANNIJS

SCHMATIC DIAGRAMS

L A R G O

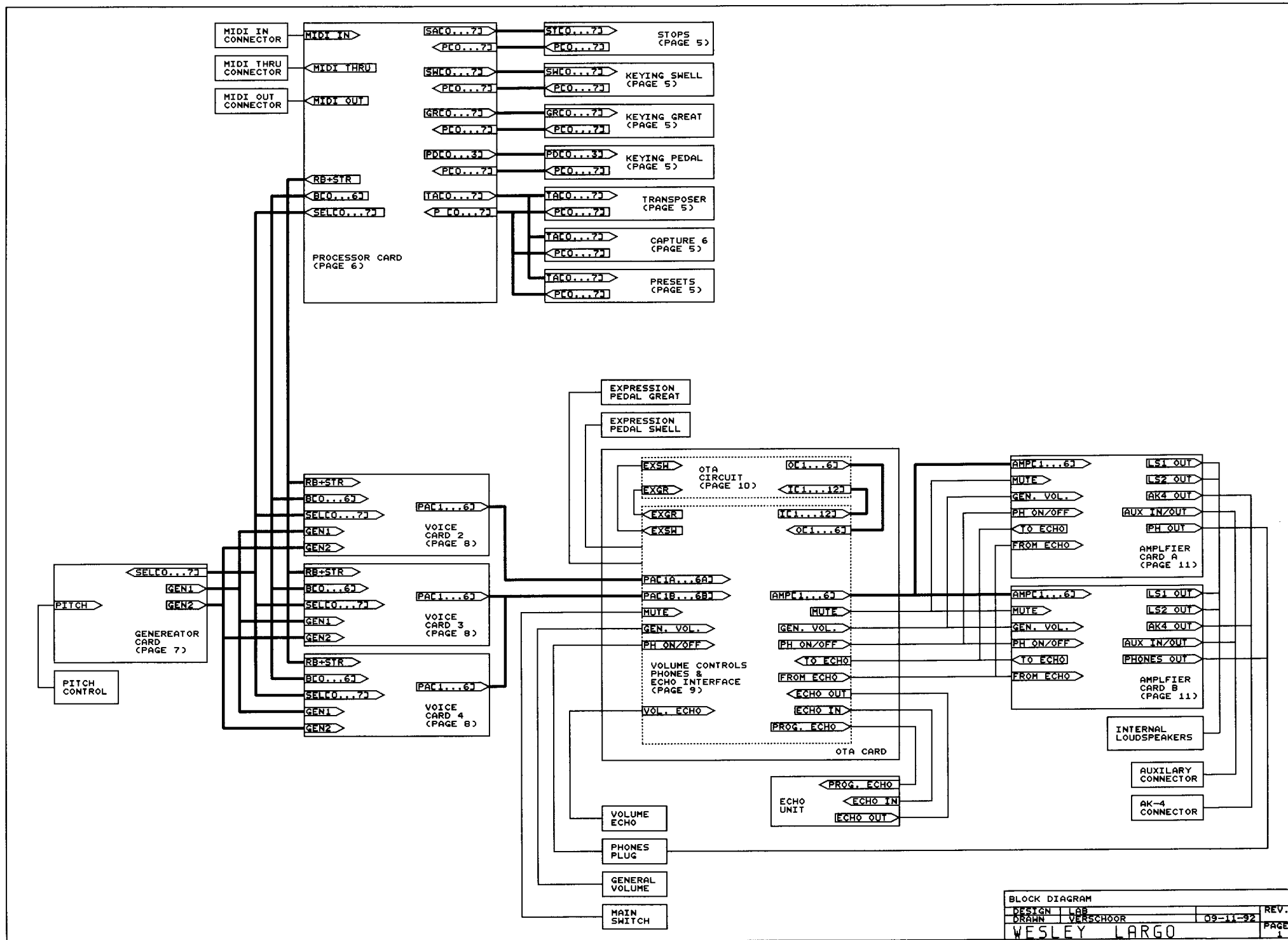
ALTERATIONS RESERVED

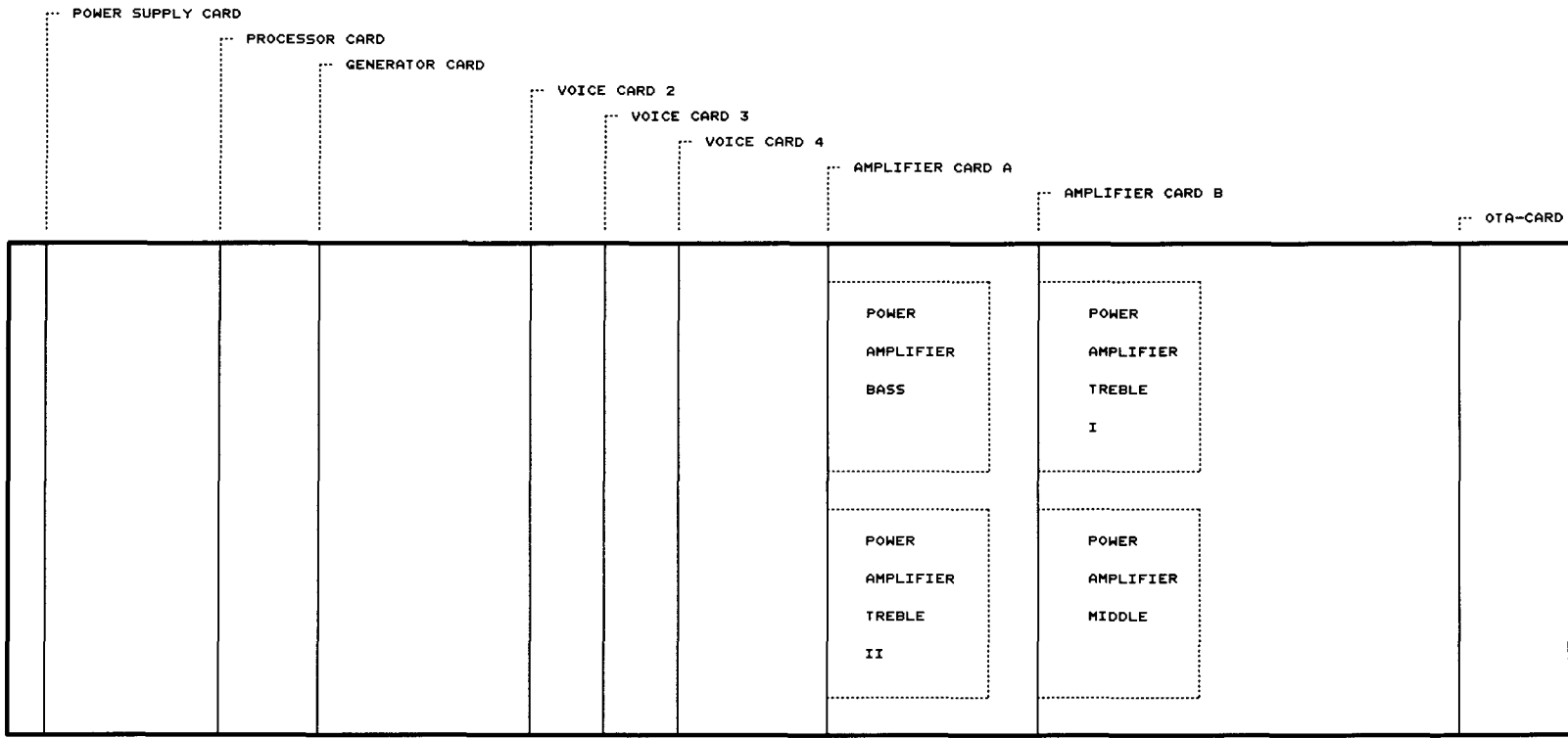
WESLEY Organs b.v.

Morsestraat 28 - 6716 AH Ede - Tel. (08380) 37403 - Fax (08380) 22238

C O N T E N T S

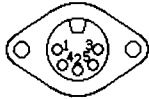
1. BLOCK DIAGRAM
2. POSITION DIAGRAM CARDS (TOPVIEW) & EXTERNAL CONNECTIONS (mounted on the rearside of the organ)
3. PINNING BUS CARD CONNECTORS
4. TRANSFORMER CONNECTIONS & POWER SUPPLY
5. SCANNING KEYING; STOPS; TRANSPOSER; PRESETS & CAPTURE 6
6. PROCESSOR CARD
7. GENERATOR CARD
8. VOICE CARD
9. VOLUMECONTROLS; HEADPHONES CONNECTIONS & ECHO INTERFACE (ota card)
10. EXPRESSION PEDAL CIRCUIT (ota card)
11. AMPLIFIER CARD
12. POSITION DIAGRAM ADJUSTMENTS
INTERNAL POTENTIOMETERS





← COMPONENT SIDE

- 1. NOT CONNECTED
- 2. NOT CONNECTED
- 3. NOT CONNECTED
- 4. +5V MIDI IN
- 5. MIDI IN



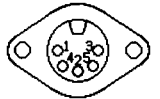
MIDI IN

- 1. NOT CONNECTED
- 2. NOT CONNECTED
- 3. NOT CONNECTED
- 4. +5V MIDI THRU
- 5. MIDI THRU



MIDI THRU

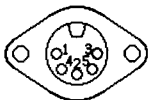
- 1. NOT CONNECTED
- 2. NOT CONNECTED
- 3. NOT CONNECTED
- 4. +5V MIDI OUT
- 5. MIDI OUT



MIDI OUT

SOLDERINGSIDE VIEW

- 1. AK-4 OUT CHANNEL A
- 2. GROUND
- 3. NOT CONNECTED
- 4. AK-4 OUT CHANNEL B
- 5. NOT CONNECTED

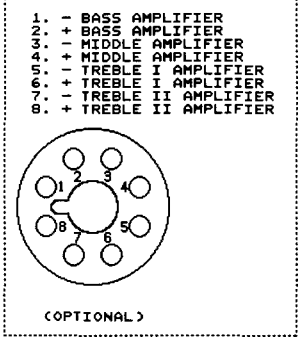


AK-4 OUT

- 1. AUX OUT CHANNEL A
- 2. GROUND
- 3. AUX IN CHANNEL A
- 4. AUX OUT CHANNEL B
- 5. AUX IN CHANNEL B

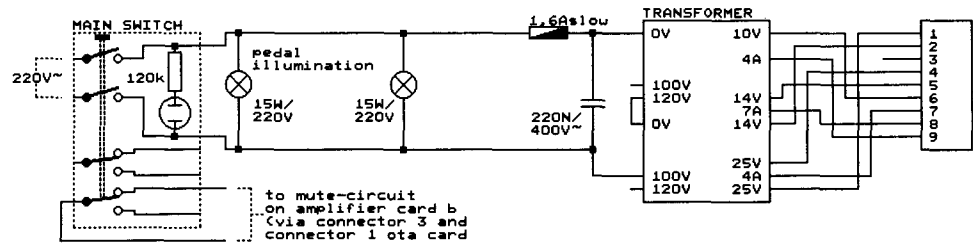


AUX IN/OUT

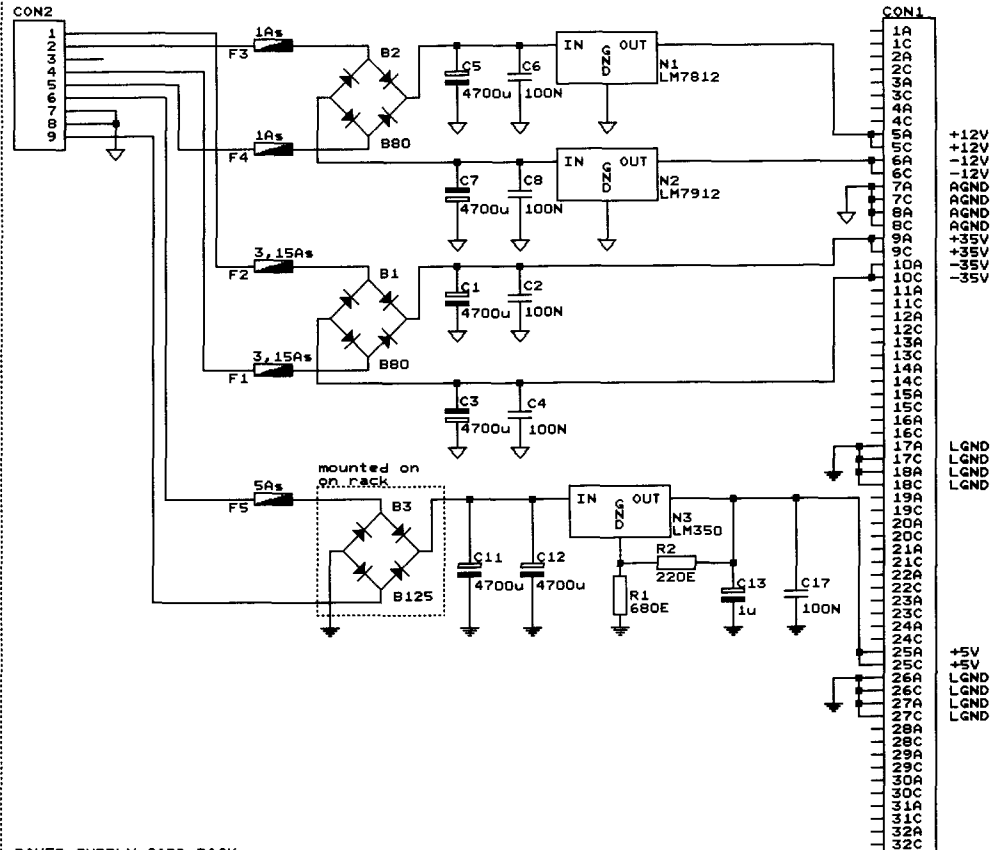


CON1	CON2	CON3	CON4-5	CON6-8	CON9-10	CON11	CON12	
015 020 030 040 +12V 050 -12V 060 AGND 070 AGND 080 AGND 090 +35V 0180 -35V 0110 0120 0130 0140 0150 0160 0170 0180 0190 0200 0210 0220 0230 0240 +5V 0250 LGND 0260 LGND 0270 0280 0290 0300 0310 0320	+12V 050 -12V 060 AGND 070 AGND 080 AGND 090 +35V 0180 -35V 0110 0120 0130 0140 0150 0160 0170 0180 0190 RB 0200 B6 0210 B4 0220 B2 0230 B0 0240 +5V 0250 LGND 0260 LGND 0270 0280 0290 0300 0310 SEL7 0320 SEL5 0330 SEL3 0340 SEL1 0350	+12V 050 -12V 060 AGND 070 AGND 080 AGND 090 +35V 0180 -35V 0110 0120 0130 0140 0150 0160 0170 0180 0190 GEN1 0200 LGND 0210 GEN2 0220 RB 0230 B6 0240 B4 0250 B2 0260 B0 0270 +5V 0280 LGND 0290 LGND 0300 0310 0320 SEL7 0330 SEL5 0340 SEL3 0350 SEL1 0360	PA1B 015 PA3B 020 PA5B 030 040 +12V 050 -12V 060 AGND 070 AGND 080 AGND 090 +35V 0180 -35V 0110 0120 0130 0140 0150 0160 0170 0180 0190 GEN1 0200 LGND 0210 GEN2 0220 RB 0230 B6 0240 B4 0250 B2 0260 B0 0270 +5V 0280 LGND 0290 LGND 0300 0310 0320 SEL7 0330 SEL5 0340 SEL3 0350 SEL1 0360	PA1A 015 PA3A 020 PA5A 030 040 +12V 050 -12V 060 AGND 070 AGND 080 AGND 090 +35V 0180 -35V 0110 0120 0130 0140 0150 0160 0170 0180 0190 GEN1 0200 LGND 0210 GEN2 0220 RB 0230 B6 0240 B4 0250 B2 0260 B0 0270 +5V 0280 LGND 0290 LGND 0300 0310 0320 SEL7 0330 SEL5 0340 SEL3 0350 SEL1 0360	AMP1 015 AMP3 020 TO ECHO 030 +12V 050 -12V 060 AGND 070 AGND 080 AGND 090 +35V 0180 -35V 0110 0120 0130 0140 0150 0160 0170 0180 0190 LGND 0200 LGND 0210 +5V 0220 LGND 0230 LGND 0240 +5V 0250 LGND 0260 LGND 0270 0280 0290 0300 0310 0320	AMP2 015 AMP4 020 FROM ECHO B 030 FROM ECHO A 040 +12V 050 -12V 060 AGND 070 AGND 080 AGND 090 +35V 0180 -35V 0110 0120 0130 0140 0150 0160 0170 0180 0190 LGND 0200 LGND 0210 +5V 0220 LGND 0230 LGND 0240 +5V 0250 LGND 0260 LGND 0270 0280 0290 0300 0310 0320	AMP3 015 AMP5 020 TO ECHO 030 +12V 050 -12V 060 AGND 070 AGND 080 AGND 090 +35V 0180 -35V 0110 0120 0130 0140 0150 0160 0170 0180 0190 LGND 0200 LGND 0210 +5V 0220 LGND 0230 LGND 0240 +5V 0250 LGND 0260 LGND 0270 0280 0290 0300 0310 0320	AMP4 015 AMP6 020 FROM ECHO B 030 FROM ECHO A 040 +12V 050 -12V 060 AGND 070 AGND 080 AGND 090 +35V 0180 -35V 0110 0120 0130 0140 0150 0160 0170 0180 0190 LGND 0200 LGND 0210 +5V 0220 LGND 0230 LGND 0240 +5V 0250 LGND 0260 LGND 0270 0280 0290 0300 0310 0320
POWER SUPPLY CARD	PROCESSOR CARD	GENERATOR CARD	VOICE CARD 1-2	VOICE CARD 3-5	AMPLIFIER CARD A & B	AMPLIFIER CARD C	OTA CARD	

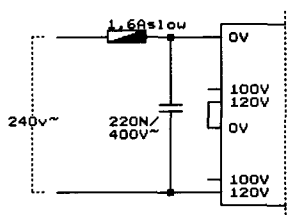
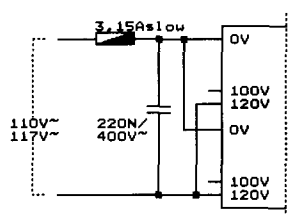
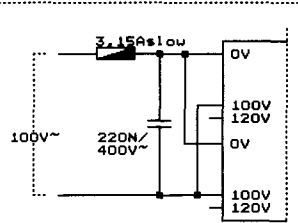
only CON6



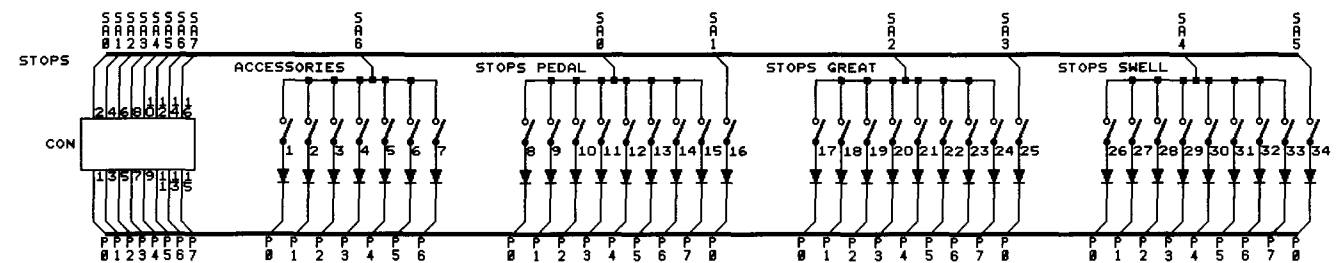
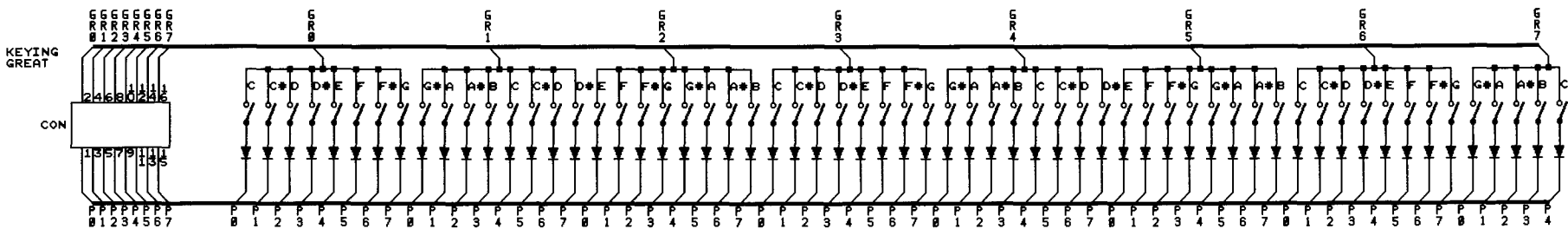
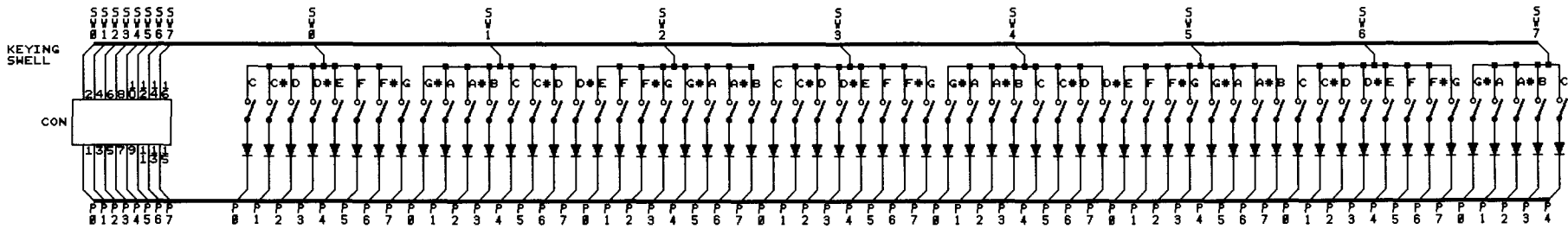
to mute-circuit on amplifier card b (via connector 3 and connector 1 of a card



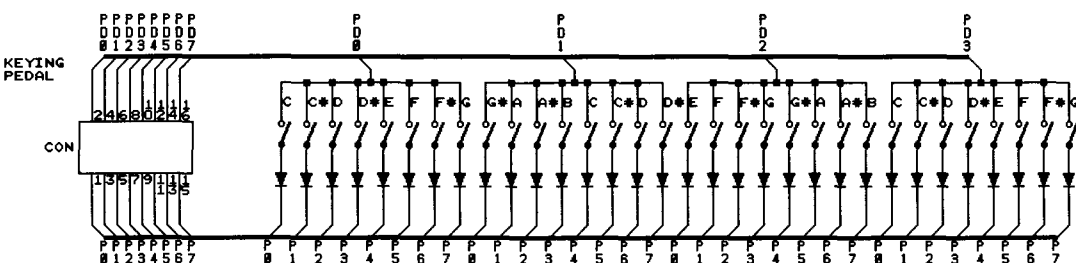
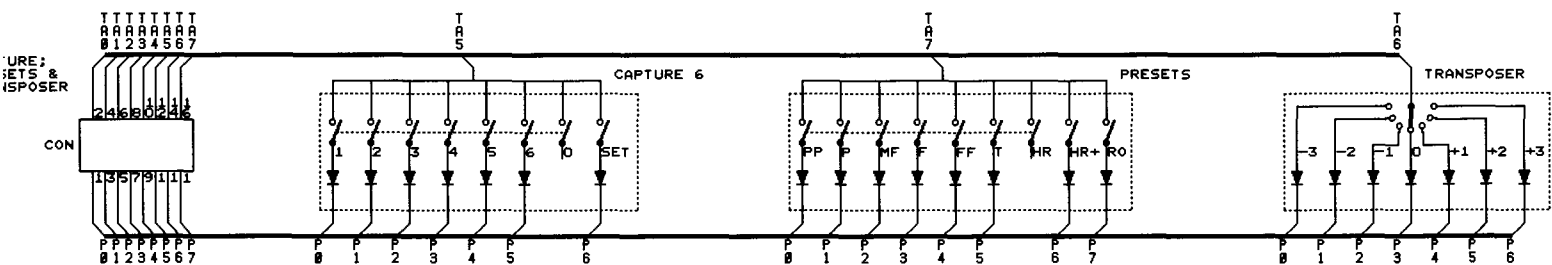
POWER SUPPLY CARD RACK



TRANSFORMER CONNECTIONS & POWER SUPPLY			
DESIGN	LAB		REV.
DRAWN	VERSCHOOR	09-11-92	PAGE
WESLEY LARGO			4

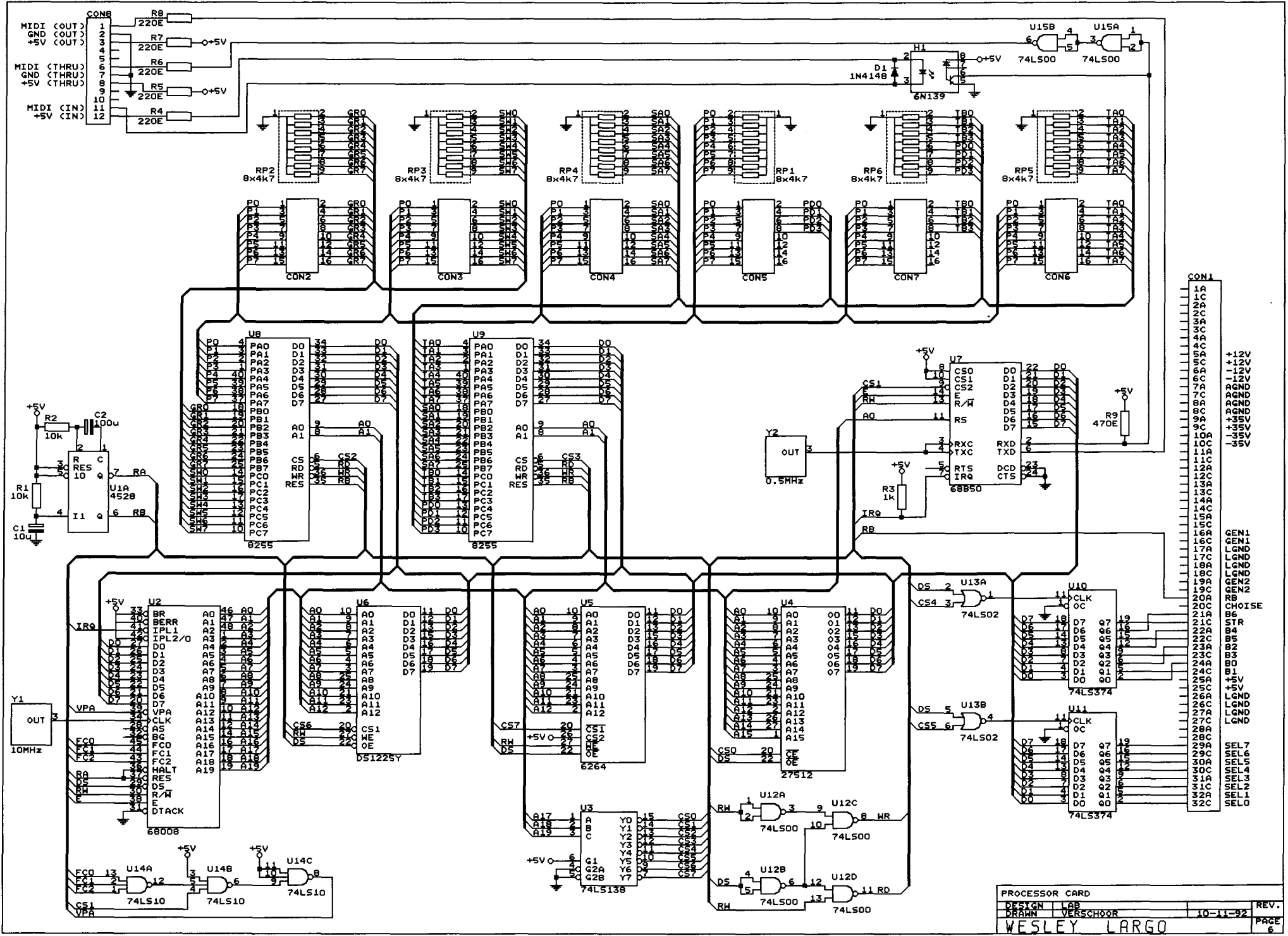


- STOPLIST
- ACCESSORIES
- 1 = SWELL TO GREAT
 - 2 = GREAT TO GREAT
 - 3 = GREAT TO PEDAL
 - 4 = SHELL TO PEDAL
 - 5 = TREMULANT GREAT
 - 6 = TREMULANT SHELL
 - 7 = CHORUS
 - 8 = MANUAL BASS
- PEDAL
- 8 = PRINCIPAL 16'
 - 9 = SUBBASS 16'
 - 10 = OCTAVE 8'
 - 11 = GEDACKT 8'
 - 12 = OPEN FLUTE 4'
 - 13 = MIXTURE III
 - 14 = TRUMPET 8'
 - 15 = CLARION 4'
 - 16 = MIDI TO PEDAL
- GREAT
- 17 = DIAPASON 8'
 - 18 = ROHRFLUTE 8'
 - 19 = PRINCIPAL 4'
 - 20 = TWELFTH 2 2/3'
 - 21 = OCTAVE 2'
 - 22 = CORNET IV
 - 23 = MIXTURE II-IV
 - 24 = TRUMPET 8'
 - 25 = MIDI TO GREAT
- SWELL
- 26 = BOURDON 16'
 - 27 = HOHLFLUTE 8'
 - 28 = GAMBA 8'
 - 29 = CELESTE 8'
 - 30 = WALDFLUTE 4'
 - 31 = CONICAL FLUTE 2'
 - 32 = NAZARD 1 1/3'
 - 33 = CROMORNE 8'
 - 34 = MIDI TO SWELL

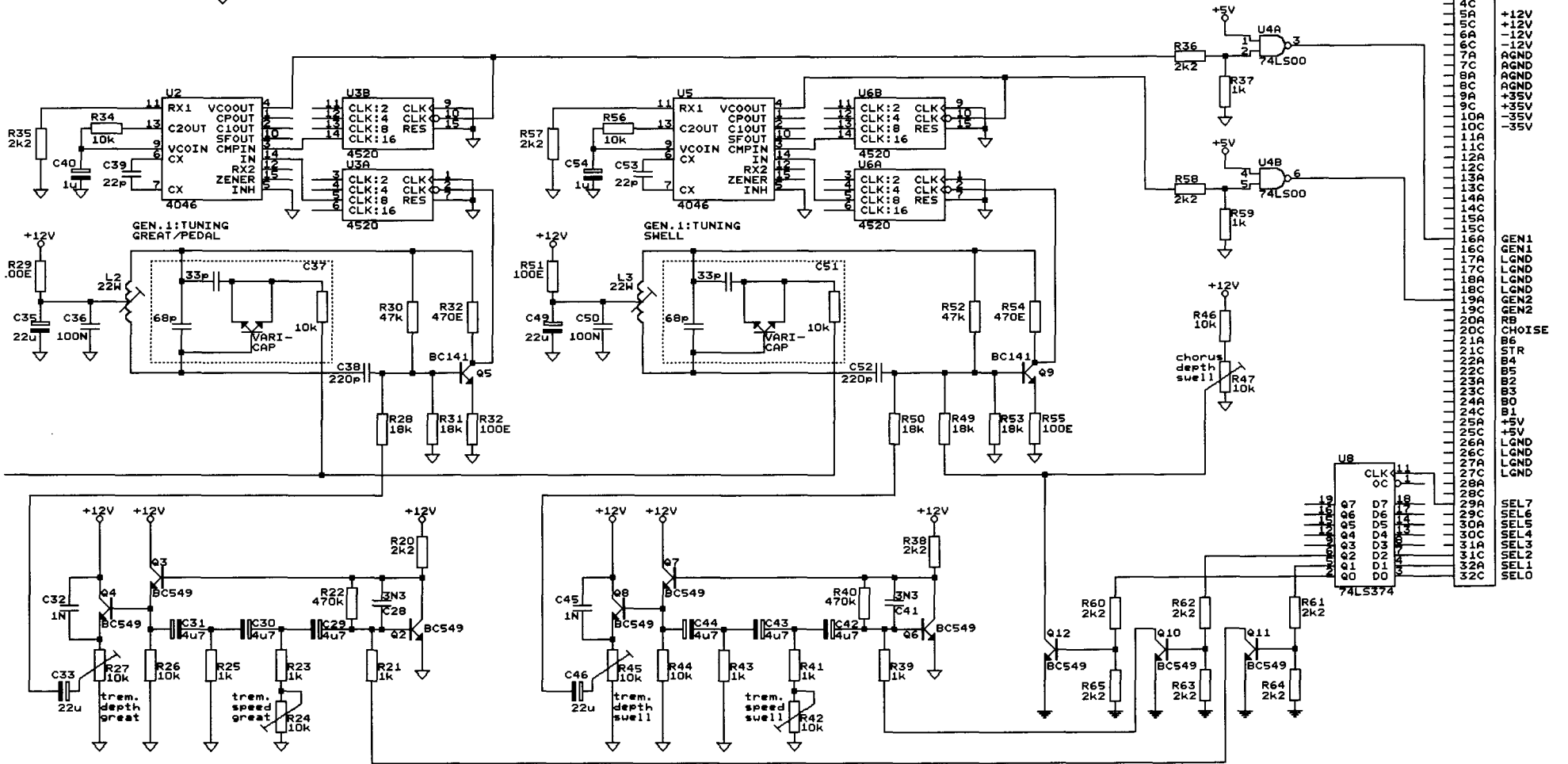
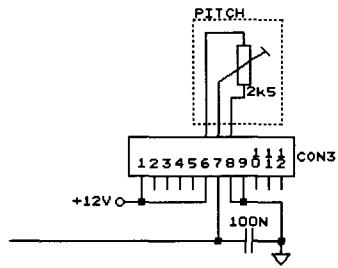


ALL CONNECTORS: TO PROCESSOR CARD
 ALL DIODES: 1N4148

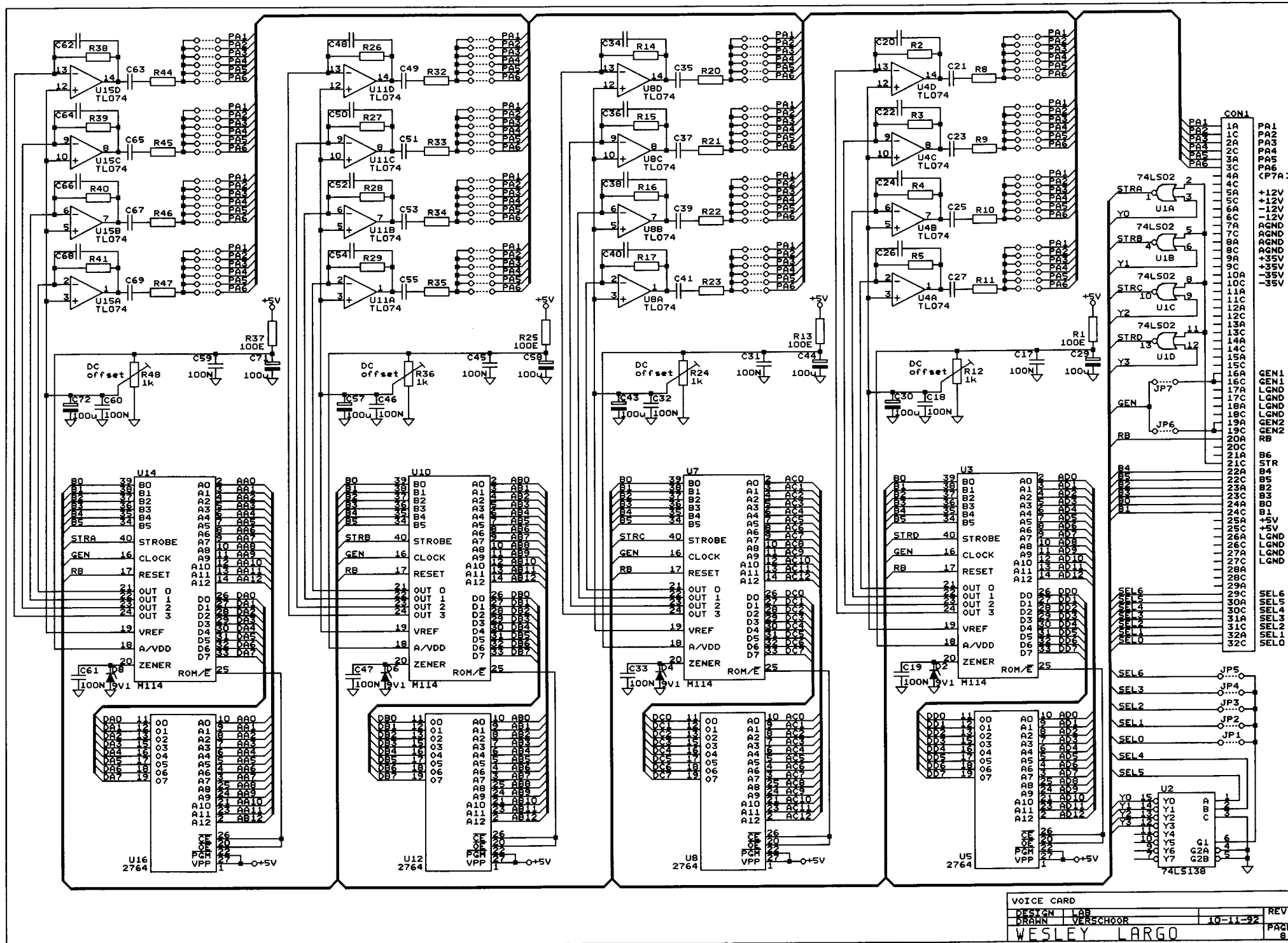
SCANNING KEYING; STOPS; TRANSPOSER; PRESETS & CAPTURE 6			
DESIGN	LAB		REV.
DRAWN	VERSCHOOR	10-11-92	
WESLEY LARGO			PAGE 5

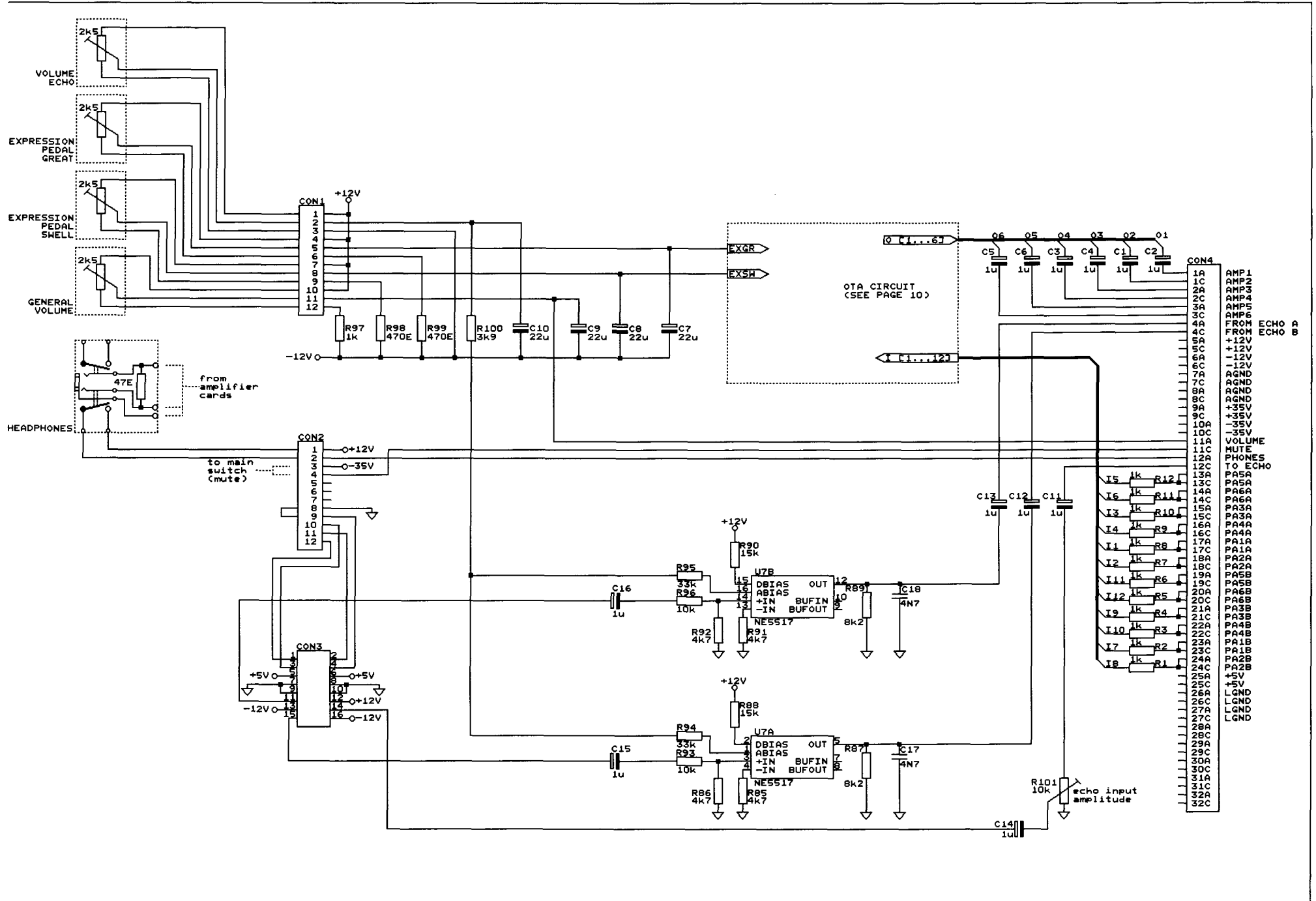


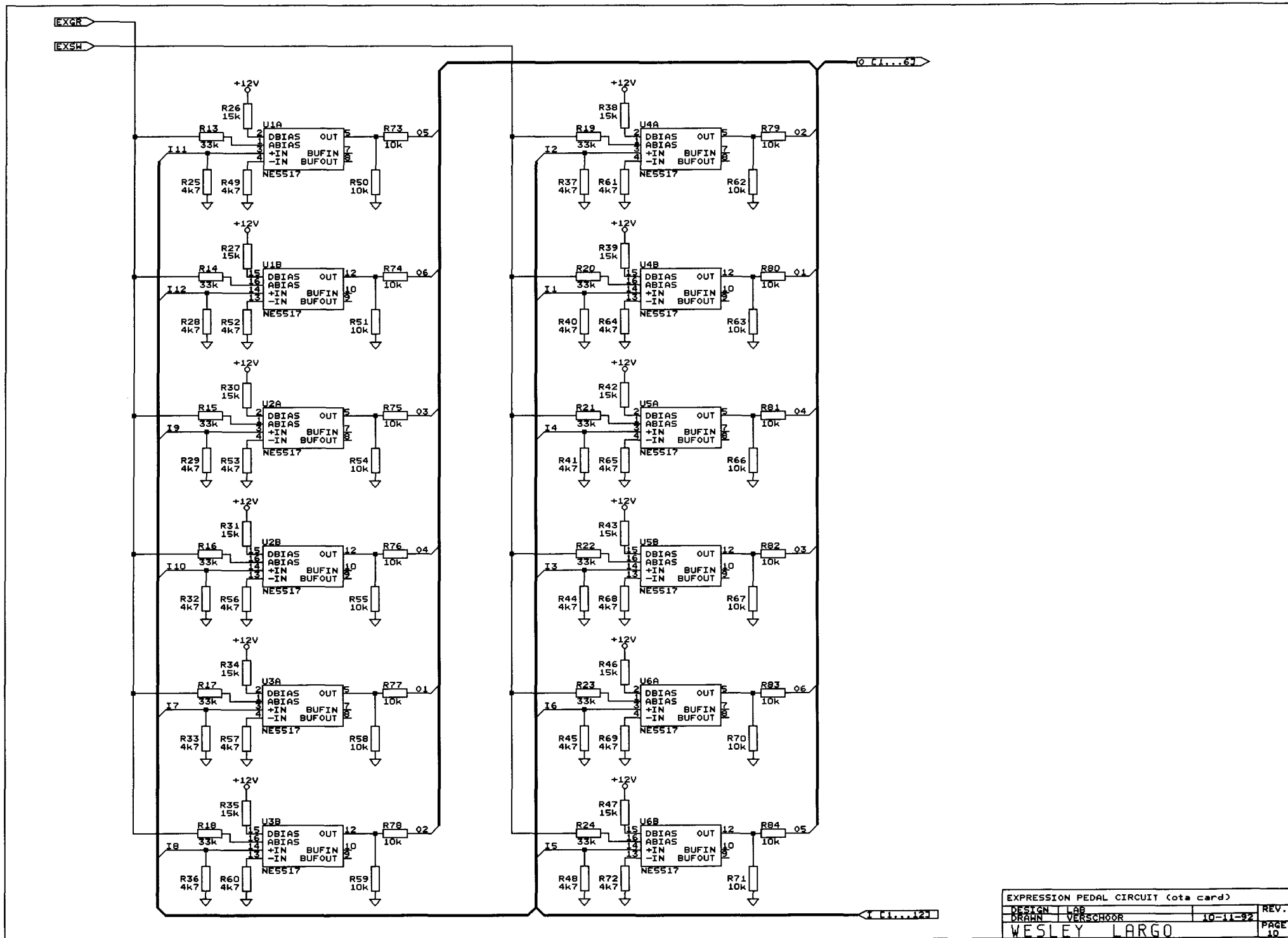
PROCESSOR CARD			
DESIGN	LAB		REV.
DRAWN	VERSCHOOR	10-11-92	PAGE
WESLEY LARGO			6



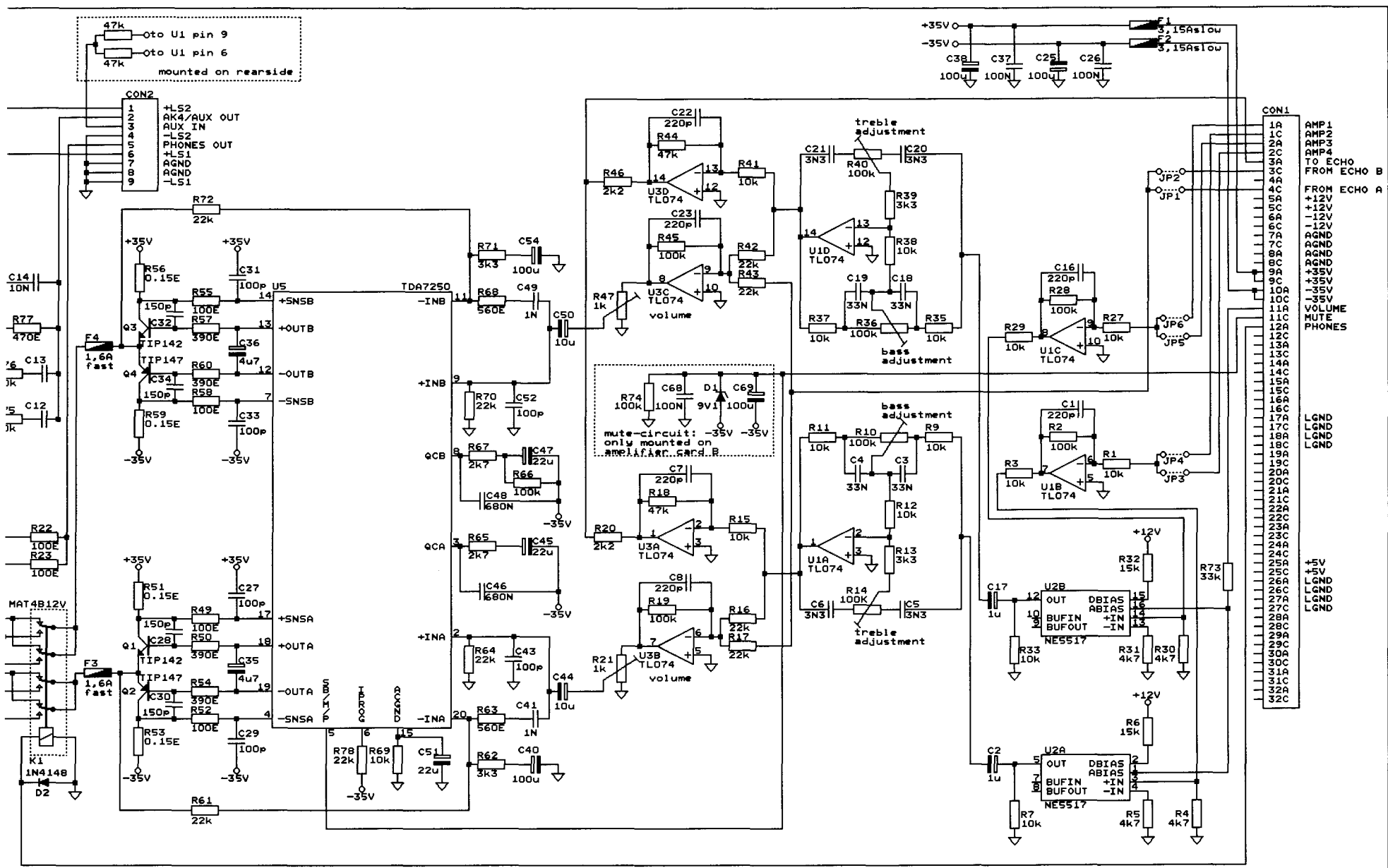
GENERATOR CARD			
DESIGN	LAB		REV.
DRAWN	VERSCHOOR	10-11-92	PAGE
WESLEY LARGO			7





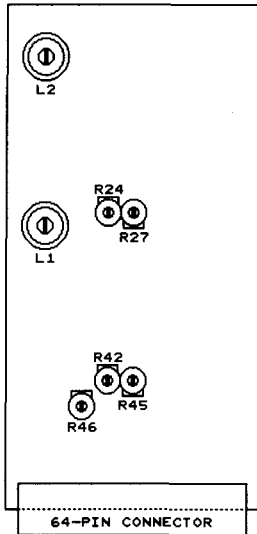


EXPRESSION PEDAL CIRCUIT (ota card)			
DESIGN	LAB		REV.
DRAWN	VERSCHOOR	10-11-92	PAGE
WESLEY LARGO			10



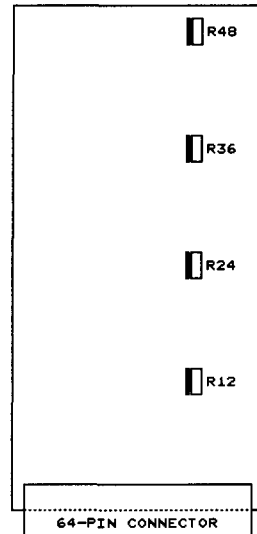
AMPLIFIER CARD			
DESIGN	LAB		REV.
DRAWN	VERSCHOOR	10-11-92	PAGE
WESLEY LARGO			11

GENERATOR CARD
(COMPONENT-SIDE VIEW)



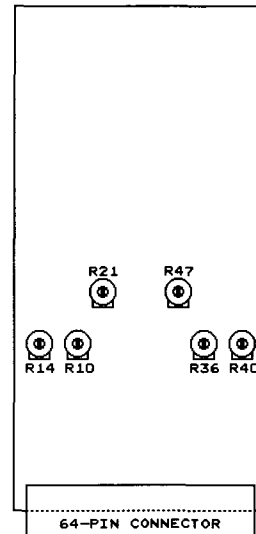
- L1 = TUNING SWELL
- L2 = TUNING GREAT
- R24 = TREMLANT SPEED GREAT
- R27 = TREMLANT DEPTH GREAT
- R42 = TREMLANT SPEED SWELL
- R45 = TREMLANT DEPTH SWELL
- R46 = INTENSITY CHORUS EFFECT

VOICE CARD
(COMPONENT-SIDE VIEW)



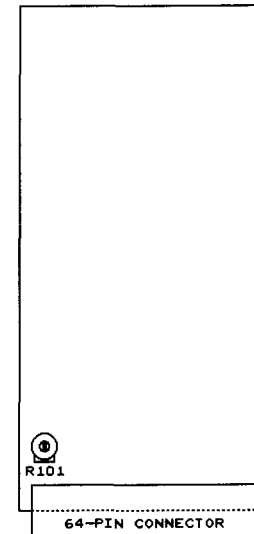
- R12 = DC-OFFSET VOICE D
(DISTORSION VOICE D)
 - R24 = DC-OFFSET VOICE C
(DISTORSION VOICE C)
 - R36 = DC-OFFSET VOICE B
(DISTORSION VOICE B)
 - R48 = DC-OFFSET VOICE A
(DISTORSION VOICE A)
- NOTE: R12-R24-R36-R48 ARE NOT
FOR CHANGING VOLUMES!!
TURNING THESE POTENTIOMETERS
WILL GIVE DISTORSION!!

AMPLIFIER CARD
(COMPONENT-SIDE VIEW)



- R10 = BASS LEFT AMPLIFIER
- R14 = TREBLE LEFT AMPLIFIER
- R21 = VOLUME LEFT AMPLIFIER
- R36 = BASS RIGHT AMPLIFIER
- R40 = TREBLE RIGHT AMPLIFIER
- R47 = VOLUME RIGHT AMPLIFIER

OTA CARD
(COMPONENT-SIDE VIEW)



- R101 = INPUT AMPLITUDE ECHO